



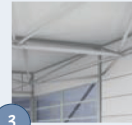
1

Clear spans up to 40 metres



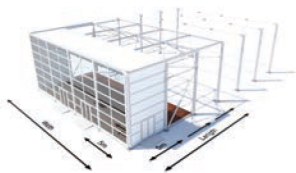
2

Heights of 5 to 12 metres



3

Hydraulic lifting technology ensures a surprisingly fast assembly time



The Product

One of the most technologically advanced temporary structures available in today's market; the Neptunus Evolution II is a mix of high-tech innovative design and high quality, durable components. It is fully relocatable, readily available and suitable for both short and long term use.

Design

As standard the Evolution II comprises an aluminium spaceframe roof, insulated sidewall panels and PVC Thermo roof. For longer use periods we fit rigid insulated roof panels. Floor options include the Neptunus raised cassette floor or a solid 16cm laminated wooden floor. Graphics featuring your company's logo or colours can easily be applied to the rigid walls.

Features

The Evolution II has a modular design with clear span widths up to 40 metres. The length of the structure is limitless and can be extended in increments of 5 metres. The innovative design means that the spaceframe roof is assembled at ground level and hydraulics lift the whole roof in a single movement. Horizontally fitted sidewall panels allow external wall heights from 5 to 12 metres.

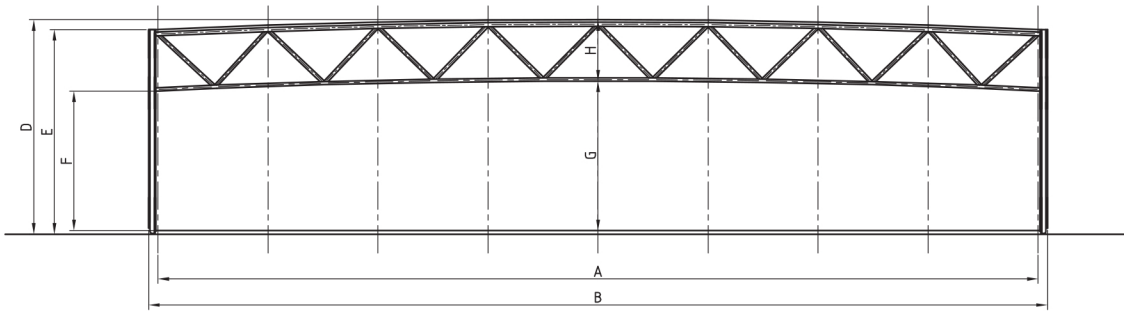
This temporary building can be equipped with mezzanine floors, climate control, vehicle doors, glass panels and electric sliding doors.

Applications

The Evolution II is a durable construction that is quick to assemble and suitable for usage period from a few days to several years. The high-quality materials make the Evolution II suitable for a multitude purposes including event halls, theatres, showrooms, exhibition halls, hospitality facilities and product launches.

The Evolution II is available to rent or to buy.





	10m	15m	20m	25m	30m	35m	40m	45m*	50m*
A	1000	1500	2000	2500	3000	3500	4000	4500	5000
B	1085	1585	2085	2585	3085	3585	4085	4585	5085
H	198	197	198	197	198	197	198	197	198
12 m high									
D	1228	1236	1238	1246	1257	1264	1273	1285	1298
E	1225	1225	1225	1225	1225	1225	1225	1225	1225
F	1014	1014	1014	1014	1014	1014	1014	1014	1014
G	1016	1025	1027	1035	1045	1053	1061	1074	1086
10 m high									
D	1038	1046	1048	1056	1067	1074	1083	1095	1108
E	1035	1035	1035	1035	1035	1035	1035	1035	1035
F	824	824	824	824	824	824	824	824	824
G	826	835	837	845	855	863	871	884	896
9 m high									
D	928	936	938	946	957	964	973	985	998
E	925	925	925	925	925	925	925	925	925
F	714	714	714	714	714	714	714	714	714
G	716	725	727	735	745	753	761	774	786
8 m high									
D	818	826	828	836	847	854	863	875	888
E	815	815	815	815	815	815	815	815	815
F	604	604	604	604	604	604	604	604	604
G	606	615	617	625	635	643	651	664	676
6 m high									
D	618	626	628	636	647	654	663	675	688
E	615	615	615	615	615	615	615	615	615
F	404	404	404	404	404	404	404	404	404
G	406	415	417	425	435	443	451	464	476
5 m high									
D	518	526	528	536	547	554	563	575	588
E	515	515	515	515	515	515	515	515	515
F	304	304	304	304	304	304	304	304	304
G	306	315	317	325	335	343	351	364	376

* Internal columns needed

